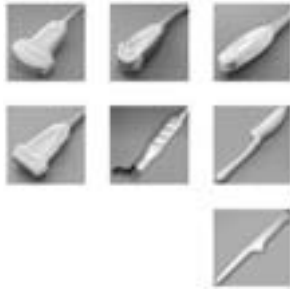
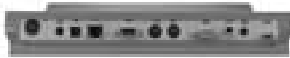


SYSTEM SPECIFICATIONS



USA HEADQUARTERS

SonoSite Inc.
21919 30th Drive SE
Bothell, WA 98021-3904
Phone: 1.425.951.1200 or
1.888.482.9449
Fax: 1.425.951.1201

Technical Support
Phone: 1.425.951.1330 or
1.877.657.8118
Email: service@sonosite.com

EUROPEAN HEADQUARTERS

SonoSite Ltd.
Alexander House
40A Wilbury Way
Hitchin, Herts SG4 0AP
United Kingdom
Technical Support
Phone: 44.1462.444.800
Fax: 44.1462.444.801
Email: europe@sonosite.com

www.sonosite.com

Clinical Applications

- Superficial
- Small Parts
 - Thyroid
 - Testicular
 - Breast
- Musculoskeletal
- Vascular
- Vascular Access
- Vascular Intraoperative
- Abdominal
- General Thoracic
- Obstetrical
- Gynecology
- Pediatric
- Neonatal Head and Abdomen

Physical Characteristics

System weight: 7.7 lbs.
System dimensions: 11.9" L x 10.9" W x 3" H
(301.9 mm L x 275.9 mm W x 75.9 mm H)
Display size: 8.4" diagonal
Mobile Docking Station weight: 88 lbs.
Mobile Docking Station dimensions:
31.9"L x 22.6"W x adjustable height 33.2" to 45.1"
(812.7 mm L x 573 mm W x 842.9-1145.2 mm H)

Imaging Modes

- 2D
- Zoom
- Color power Doppler
- Directional color power Doppler
- M-mode
- Pulsed wave Doppler
- Tissue Harmonic Imaging

Transducers

- Lightweight with rapid, pinless connector
- C60/5-2:60-mm broadband curved array
- ICT/8-5:11-mm broadband intercavity array
- C8/8-5:15-mm broadband tightly curved array
- C11/8-5:11-mm broadband curved array
- C15/4-2:15-mm broadband tightly curved array
- L38/10-5:38-mm broadband linear array
- HST/10-5:25-mm broadband linear array

User Interface

Controls: power, text, picto, THI, zoom, depth, near gain, far gain, overall gain, caliper, calculations, record, freeze, cine forward, cine back, select, save, print, delta key, update, system setup, patient report, image review, patient, update, M-mode, Doppler, Color, 2D, remappable controls

System Parameters

- System dynamic range: can exceed 155dB
- Frame rate >150Hz maximum acquisition, 60Hz internal video display

Image Storage and Cine

- Storage: High capacity using compact flash card
- Cine: image retained for frame-by-frame viewing up to 220
- Connect directly to a PC with SiteLink image manager software using a USB cable from the system. Allows transfers of high resolution bitmap or JPEG images
- Image transfer to a PC in the background (system can image during image transfer)

Clinical Analysis Package

- OB Calculation Package
- Vascular Calculation Package
- Volume Calculations

Measurement Tools

- 2D
 - Distance calipers – two sets
 - Ellipse for area and circumference

Measurements

- M-mode
 - Distance and Time caliper set
 - Heart rate
- Doppler
 - Velocity caliper – two sets

Power

- Operates via battery or AC power – 1.5 up to 4 hours on fully charged, new battery
- Battery: rechargeable lithium ion
- AC: via universal power adapter, 100-240 VAC, 50-60 Hz

Display Annotation

- Text and pictograms

Peripheral Connections

- Composite video output (NTSC/PAL) to videocassette recorder, video printer or external monitor
- Connect to a PC via USB to download high resolution bitmap images
- S-video output
- Ethernet output
- VGA output

Connectivity

- DICOM storage class software available (integrated with SiteLink)