

# M5Vet Hand-carried Color Doppler Diagnostic Ultrasound System

With light weight and various transport solutions, M5Vet is an ideal choice for veterinary examination anytime, anywhere you need it!



Comfortable backpack



Trolley case



A rich transducer series



Extending probe connectors



Maximum I/O connectivity

## Highly Portable with Full Functionality

- Full range of imaging and display modes including 2D, M, Color, PW, CW, HPRF, Power, DirPower, iScape View™ (panoramic imaging) and Smart3D™ (free hand 3D imaging)
- 30cm deep scanning depth for abdomen probe
- 80G hard disk
- Fast boot-up time and quick switch between exam modes
- Internal batteries for one hour continuous scanning
- Magnesium alloy case and dustproof film for practice in unfriendly environment

Distributed by:  
Smart Works, Inc  
4164 Austin Bluffs Pkwy. #361  
Colorado Springs, CO 80918  
1-866-999-2656  
<http://www.smartworksimaging.com>  
[sales@smartworksimaging.com](mailto:sales@smartworksimaging.com)



MINDRAY is a trade mark of Shenzhen Mindray Bio-Medical Electronics Co., Ltd. Specifications subject to change without notice.  
PIN: ENG-M5Vet-420285-20080721

© 2008 Shenzhen Mindray Bio-Medical Electronics Co., Ltd. All rights reserved.

## Diagnostic Ultrasound System

# M5Vet Hand-carried Color Doppler



[www.mindray.com](http://www.mindray.com)



# M5Vet Hand-carried Color Doppler Diagnostic Ultrasound System



## Dedicated Workflow

Dedicated to providing the best veterinary solutions with advanced technologies, Mindray constantly endeavors to develop high-performance ultrasound systems. Even at first glance, M5Vet's smart interface reveals the considerate design of workflow that combines our core value of making the easiest-to-operate ultrasound device with our emphasis on customer's comfort.

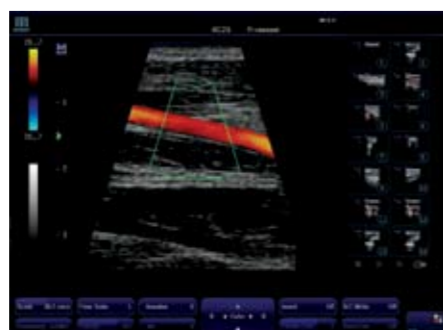
- Context-based hot keys: Easy access to system menus and active parameter adjustment
- Q-click™: Click and adjust on-screen parameters directly
- One button image saving
- Fast image optimization
- Thumbnail review during live scanning
- Editable report and print view

## Professional Design for Veterinary Use

- Veterinary information management
- Veterinary body mark
- Veterinary comment
- Veterinary OB table
- User-define measurement package



Image Review



Thumbnail Review

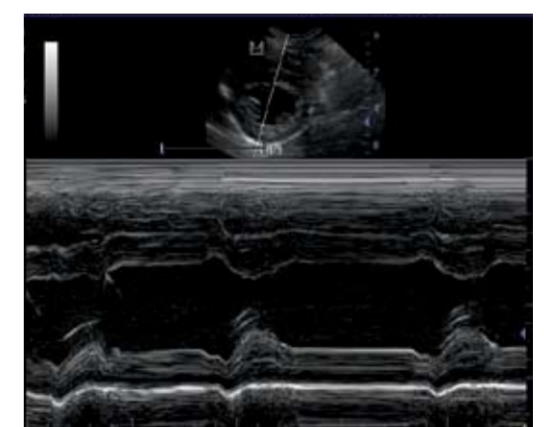


Report Template

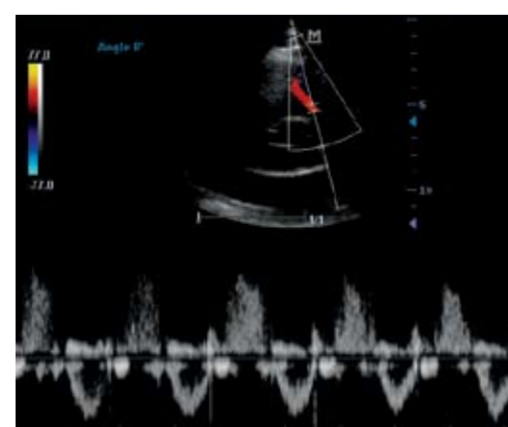
## A Commitment to Robust Performance



Among the family of hand carried ultrasound dedicated to veterinary applications, M5Vet has raised the 2D and color image quality to a new level, bringing about more diagnostic confidence in detecting various abdominal abnormalities.



M5Vet provides complete diagnostic solutions for reproductive examinations through professional measurement and calculation software packages for Dog, Cat, Equine, Bovine and Ovine.



Equipped with PW (Pulsed wave Doppler), HPRF (High Pulse Repetition Frequency) and CW (Continuous wave Doppler), M5Vet greatly enhances the diagnostic accuracy of echocardiography.



Most recent research in the evaluation of tendon abnormalities as well as nerve imaging has proved the advantage of iBeam™ (spatial compounding imaging) which effectively reduces noise and significantly improves contrast and resolution.